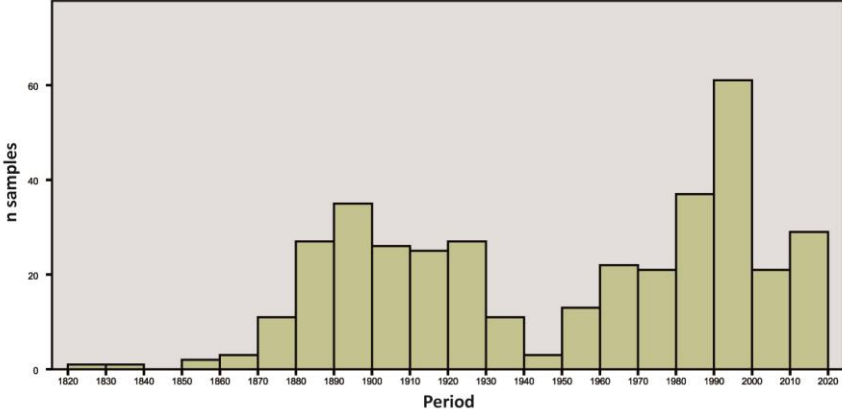
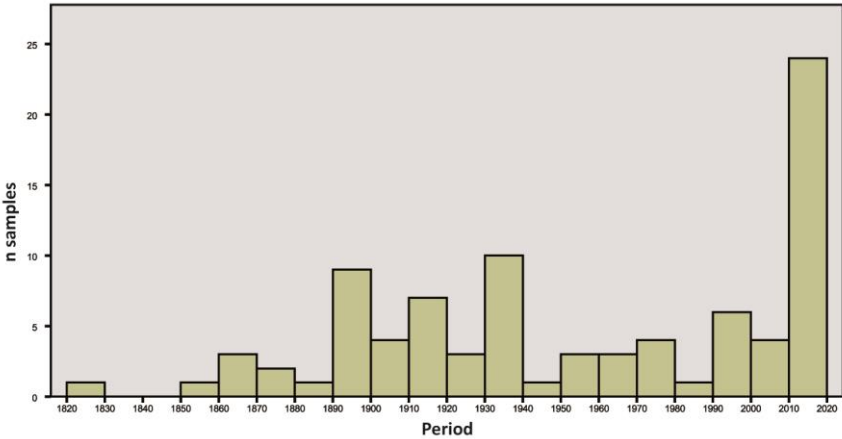


Electronic Appendix 3. Bar charts depicting entire sampling history including multiple entries grouped into decades for (A) *Gentianella austriaca*, (B) *G. praecox*, x-axis give the collecting period starting in the year 1820, y-axis the absolute number of records.

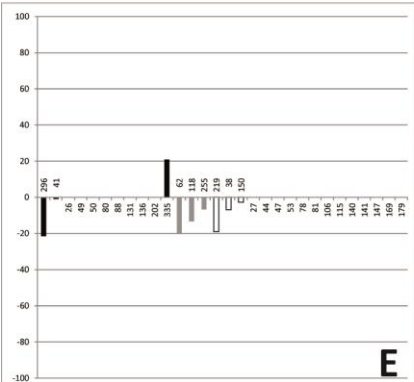
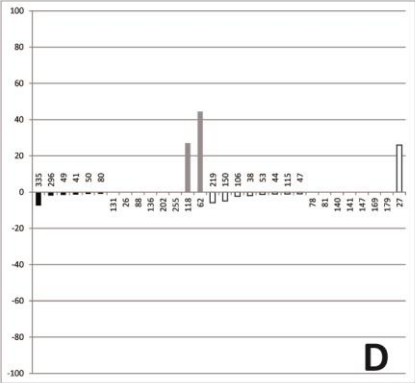
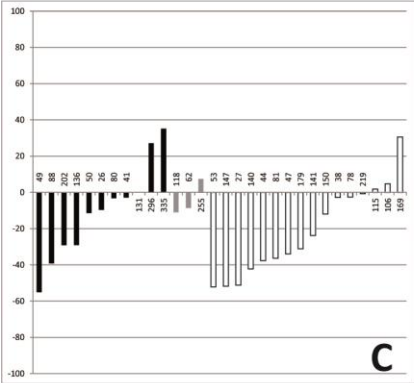
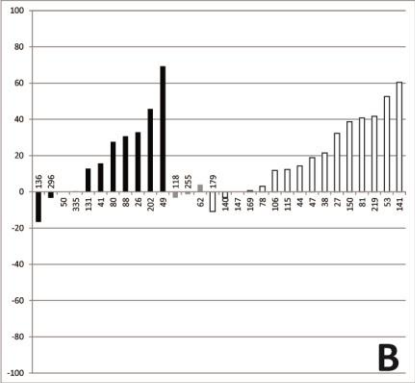
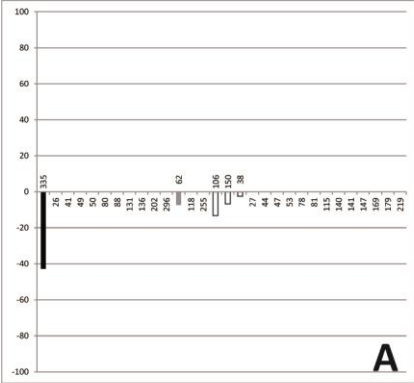
A



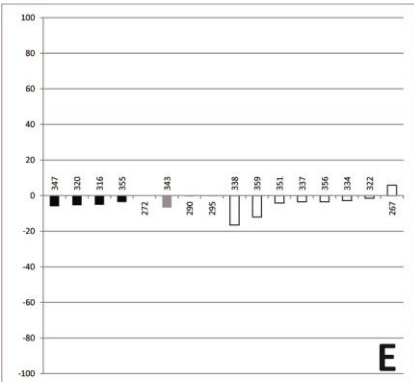
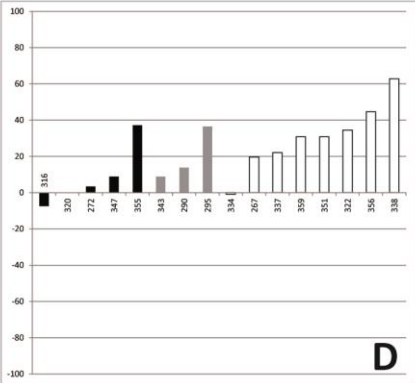
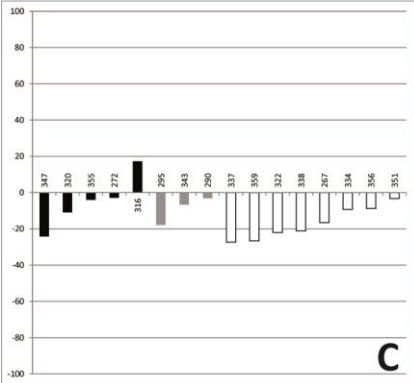
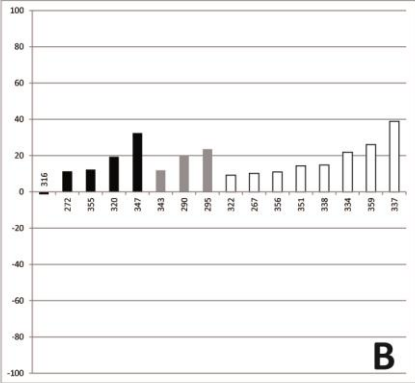
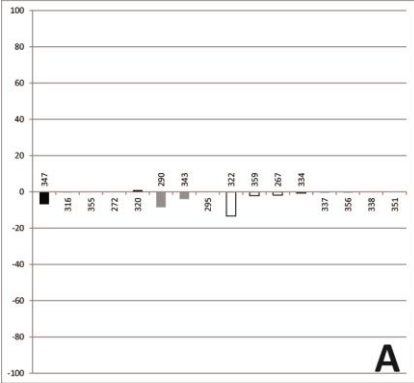
B



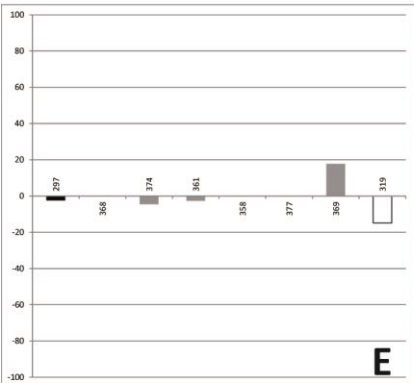
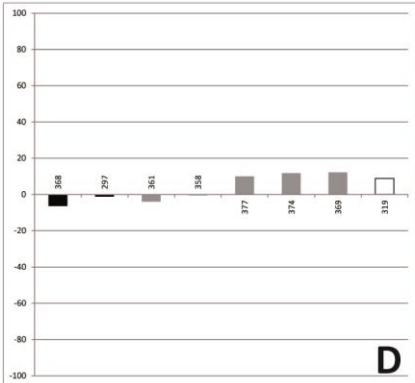
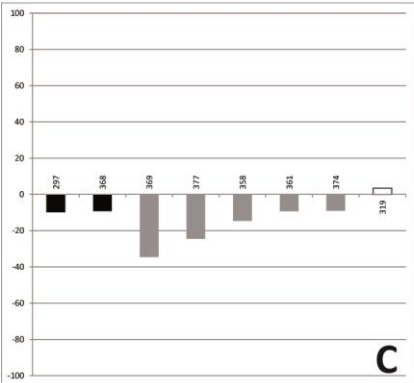
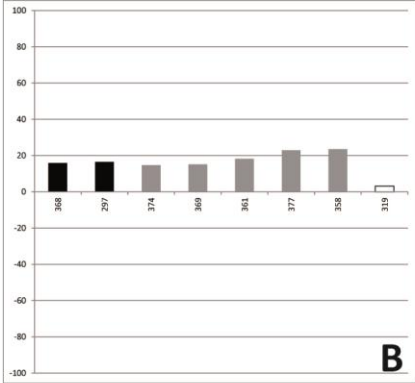
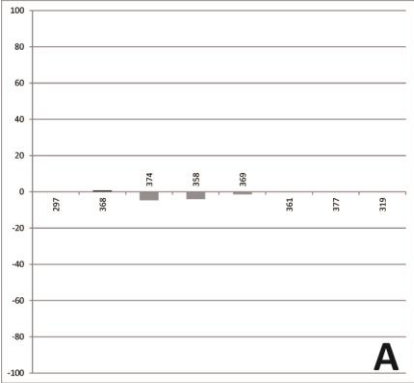
Electronic Appendix 5. Bar charts depicting the changes in proportions of habitat types in sampled plots in Nördliche Kalkalpen region: (A) shows the % shifts in wetlands, (B) forests, (C) grasslands, (D) settlements, (E) arable land; the data is grouped in three categories according to presence of the plant: (a) before and after 1960 in black; (b) only before 1960 in grey; and (c) before 1960 and in the vicinity afterwards in white.



Electronic Appendix 7. Bar charts depicting the changes in proportions of habitat types in sampled plots in Kalk-Wienerwald region: (A) shows the % shifts in wetlands, (B) forests, (C) grasslands, (D) settlements, (E) arable land; the data is grouped in three categories according to presence of the plant: (a) before and after 1960 in black; (b) only before 1960 in grey; and (c) before 1960 and in the vicinity afterwards in white.



Electronic Appendix 8. Bar charts depicting the changes in proportions of habitat types in sampled plots in Flysch-Wienerwald region: (A) shows the % shifts in wetlands, (B) forests, (C) grasslands, (D) settlements, (E) arable land; the data is grouped in three categories according to presence of the plant: (a) before and after 1960 in black; (b) only before 1960 in grey; and (c) before 1960 and in the vicinity afterwards in white.



Electronic Appendix 9. Bar charts depicting the changes in proportions of habitat types in sampled plots in Kalkvoralpen region: (A) shows the % shifts in wetlands, (B) forests, (C) grasslands, (D) settlements, (E) arable land; the data is grouped in three categories according to presence of the plant: (a) before and after 1960 in black; (b) only before 1960 in grey; and (c) before 1960 and in the vicinity afterwards in white.

