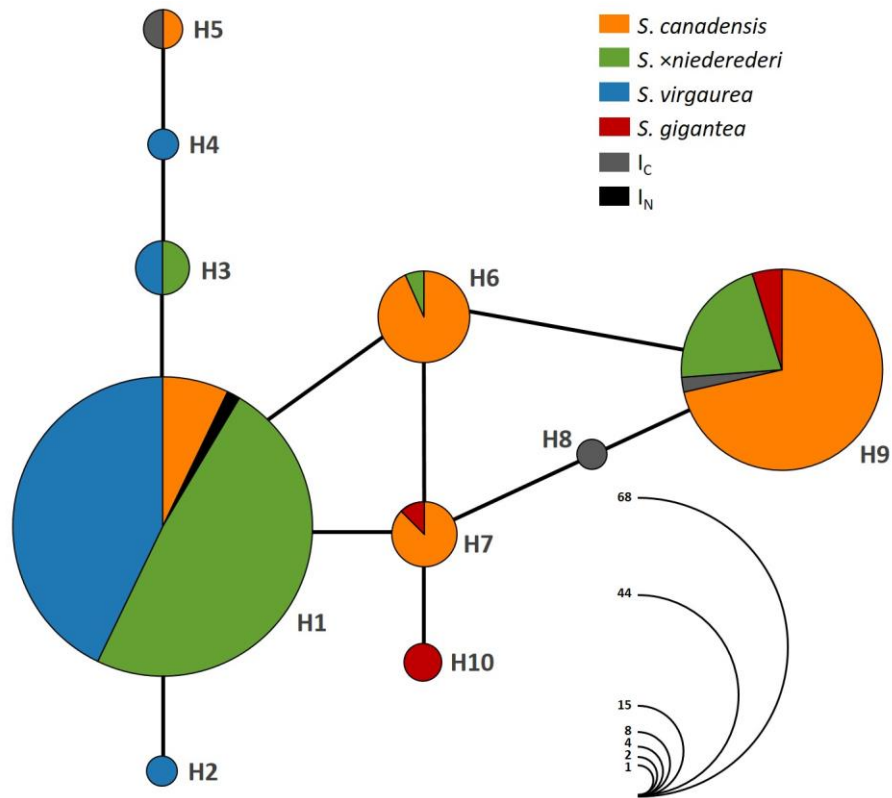


Skokanová K., Šingliarová B., Španiel S., Mered'a Jr. P., Mártonfiová L. & Zozomová-Lihová J. (2022) Relative DNA content differences reliably identify *Solidago*  $\times$ *niederederi*, a hybrid between native and invasive alien species. – *Preslia* 94: 183–213.



**Supplementary Fig. S3.** – Maximum parsimony network of the cpDNA haplotypes (the *rpS15-ycf1* spacer) of the *Solidago* taxa studied. Lines represent mutational steps and circle sizes are proportional to haplotype frequencies (see scale), colours indicate taxon; I<sub>C</sub>, I<sub>N</sub> – supposed introgressants of *S. canadensis* and *S. x niederederi* (see Results).